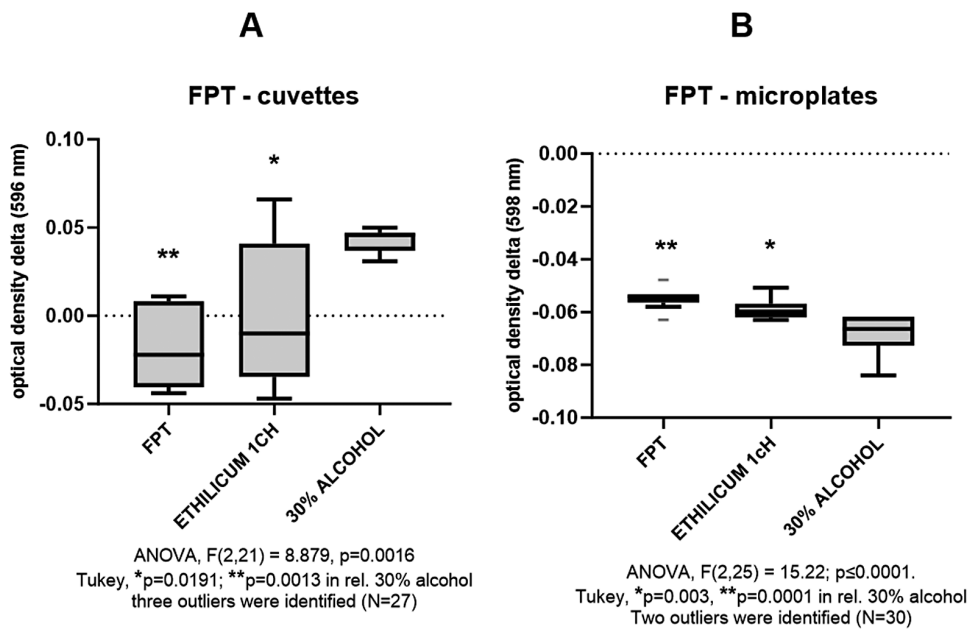
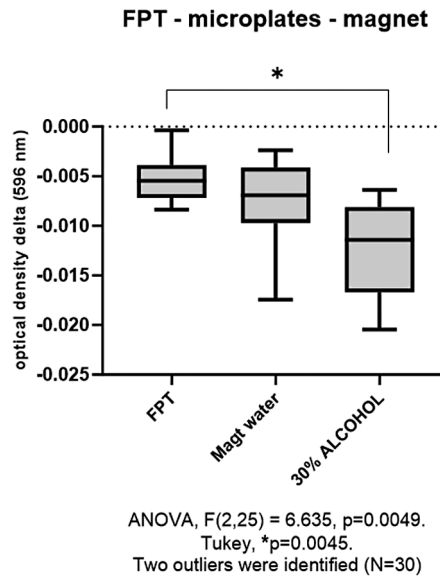


Supplementary Fig. S1 Vulnerability integrated zoning of PENT, adapted from reference 47. White stars have been added to the chart to indicate points 2 and 4. The anthropic activity at these points were tourism and mineral extraction near point 2, and small farms near point 4, according to Carrijo 2005.<sup>47</sup>



Supplementary Fig. S2 Analysis comparing the delta of absorbance for methylene violet between the homeopathic complex (*Formula Parque Taquari*, FPT) and the controls (*Ethilicum 1cH* and 30% non-succeded alcohol) in the cuvette/spectrophotometer test [A]) or microplate/ELISA reader test ([B]). Statistical data are represented at the bottom of the graph.  $N = 9$  to 10 for each group.



**Supplementary Fig. S3** Analysis comparing the delta of absorbance for methylene violet between the magnetized homeopathic complex (*Formula Parque Taquari*, FPT) and the respective controls (magnetized water and magnetized 30% non-succused alcohol) in the microplate test. Statistical data are represented at the bottom of the graph.  $N = 10$  for each group.